





# WHAT SHAPES THE HIGH LINE

We're an enthusiastic community working together on maintaining our gardens, presenting groundbreaking public programs and art, working with local teens, building a movement around hybrid public spaces with local and national peers, connecting with neighbors and New Yorkers, and developing innovative ideas for the future.

On the following pages, we'd like to share some of the stories that show the collective nature of this vibrant public park.

**The High Line is:**



**"IT'S ONE OF THOSE  
RARE PRESERVATION  
PROJECTS THAT  
MAKES PEOPLE FEEL  
LIKE THEY CAN GET  
INVOLVED AND BE A  
PART OF IT."**

— Julie, Park visitor

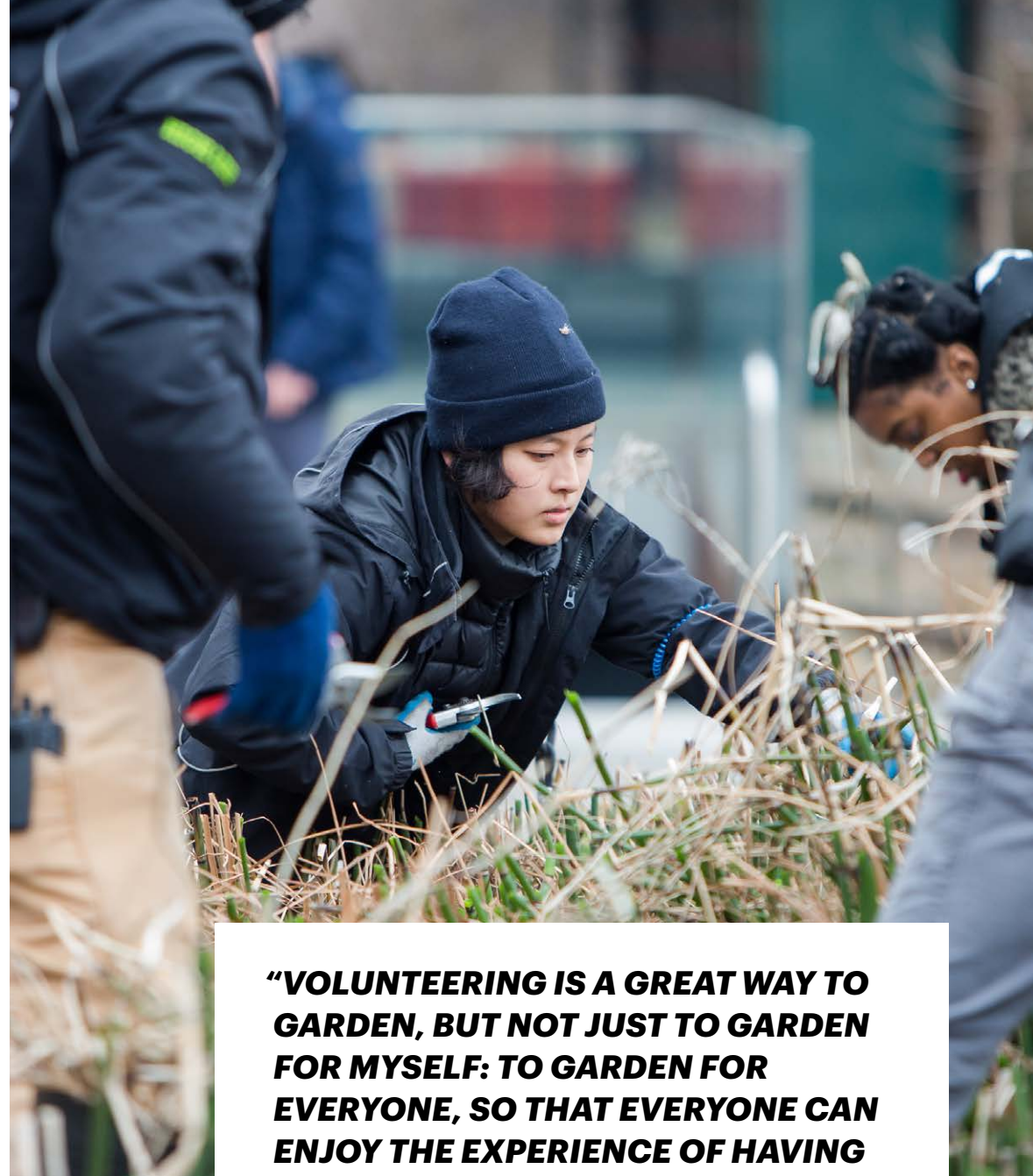


The High Line is:

## **A SUSTAINABLE STRUCTURE**

We've been green since the start. Every day, we strive toward sustainability. Our plants, trees, and pollinators are treated with care. The park is a wild place that offers a healthy, green respite from the day-to-day.

We've collaborated with entomologists from the American Museum of Natural History to learn more about bees in the park. This year during our annual **Spring Cutback** we selectively left four different plant species standing in order to preserve known pollinator nesting sites.



**“VOLUNTEERING IS A GREAT WAY TO GARDEN, BUT NOT JUST TO GARDEN FOR MYSELF: TO GARDEN FOR EVERYONE, SO THAT EVERYONE CAN ENJOY THE EXPERIENCE OF HAVING THE GREENERY.”**

— Lebasi, Horticulture Partner





**“WE CULTIVATE A KIND OF WILDNESS HERE THAT IS VERY DIFFERENT FROM ANY OTHER KIND OF GARDENING I’VE EVER DONE. WE’VE MADE A HABITAT FOR WILD AND NATIVE BEES. THE ENVIRONMENT IS HERE. IT’S ALL AROUND US.”**

— Andi, Director of Horticulture

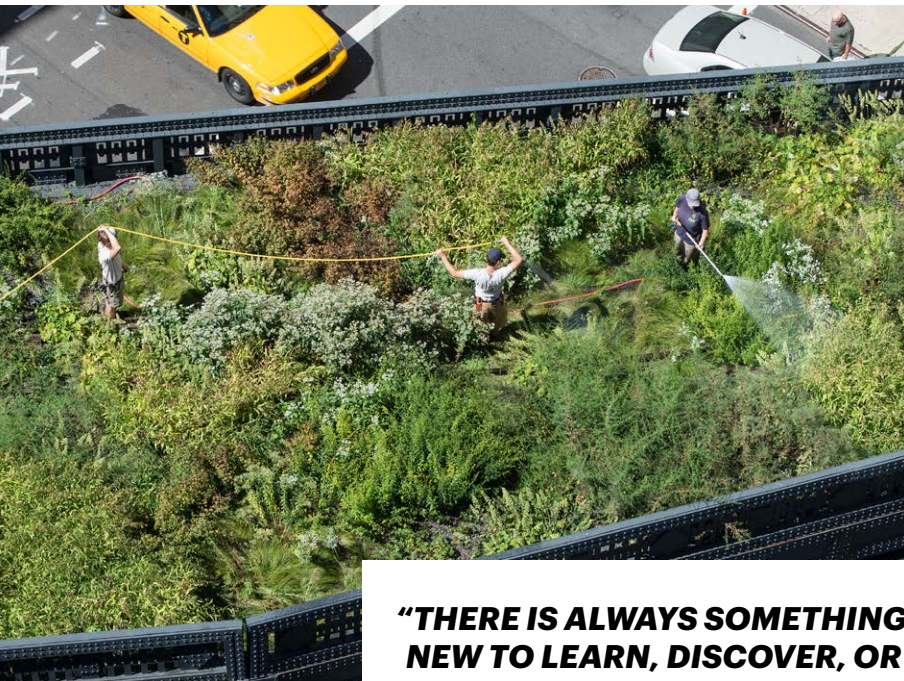




The High Line is:

# CULTIVATING COLLABORATION

Collaboration is at the heart of the High Line. We learn and grow from working side-by-side with a team of volunteers, commissioned artists, government officials, community members, public program participants, neighbors, and supporters like you.



**“THERE IS ALWAYS SOMETHING NEW TO LEARN, DISCOVER, OR EXPERIENCE. EVERYONE HAS TO WORK TOGETHER TO MAKE SOMETHING BEAUTIFUL THAT ULTIMATELY BRINGS JOY TO SO MANY.”**

— Gammy, *Horticulture Partner*

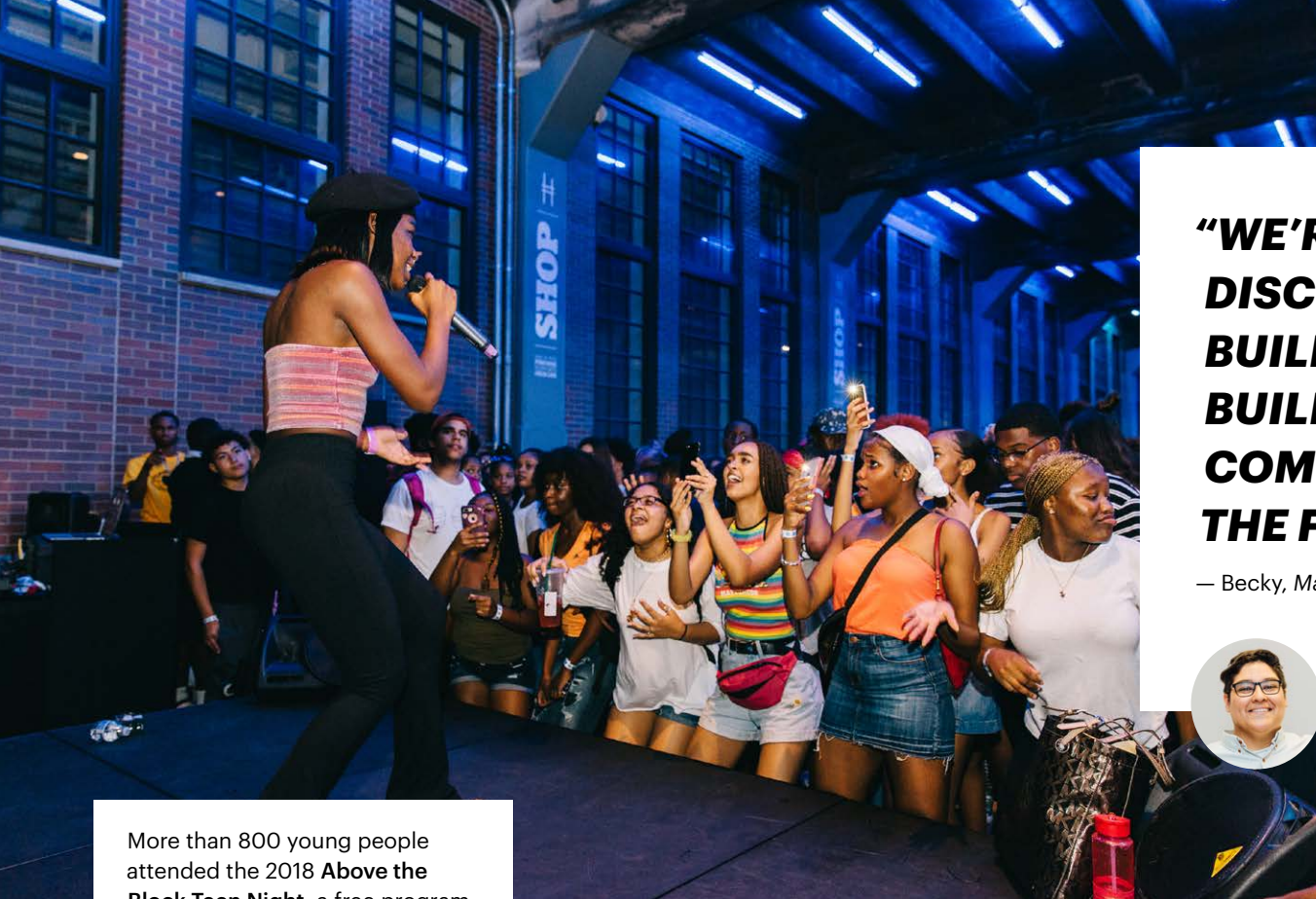


Attendees at **Serena Korda's** High Line Art performance *Missing Time*.



Families come together to dance, play, and learn at our **Family Festivals**, including **Drag Queen Story Hour**.





**“WE’RE WORKING ACROSS DISCIPLINES—IT’S REALLY ABOUT BUILDING RELATIONSHIPS, BUILDING TRUST, BUILDING COMMUNITY—THAT’S ALWAYS THE FIRST STEP.”**

— Becky, Manager of Youth Cultural Organizing

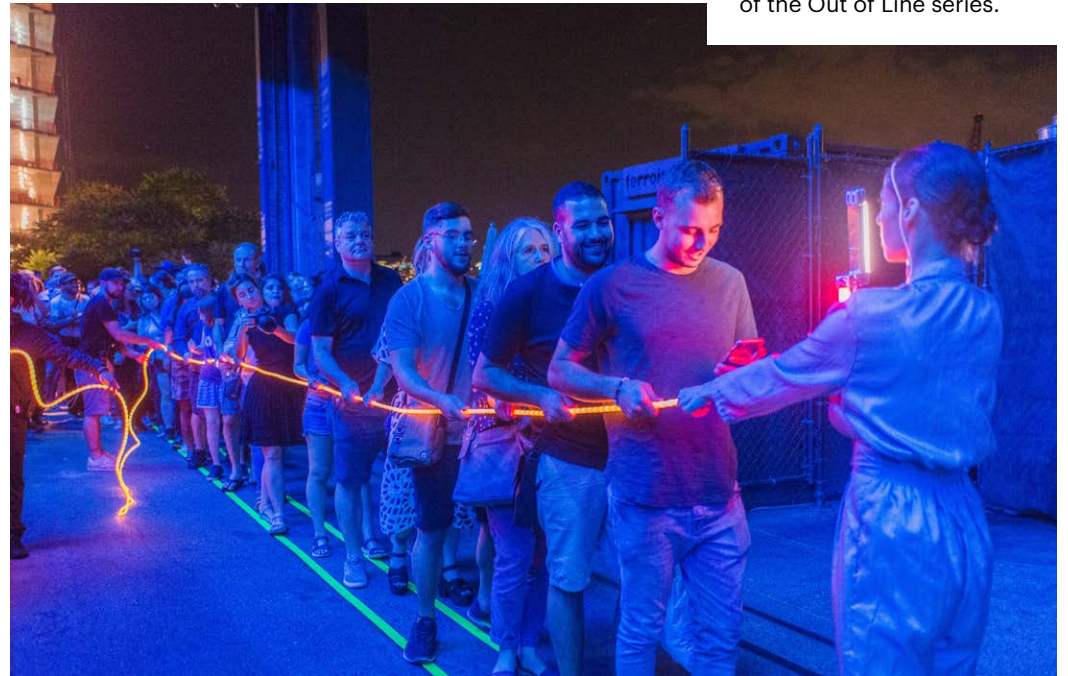


More than 800 young people attended the 2018 **Above the Block Teen Night**, a free program organized by the High Line Teens.

Participants having a hand in **Yara Travieso’s No More Shimmering Cowboys**, part of the Out of Line series.



Our maintenance team repairing a park crowd-favorite: the water feature on the Diller – von Furstenberg Sundeck.





The High Line is:

## A PLATFORM FOR BOLD VOICES

Boldness is in our blood. Inspired by the surreal hidden landscape on the tracks, Joshua David and Robert Hammond founded Friends of the High Line after meeting at a community board meeting in 1999. Nearly two decades later and we're still pushing boundaries.

Saving and transforming the High Line made the "crazy credible" as Co-Founder Robert Hammond often says. Many people once thought the railway was an eyesore.



Getting energized at the "17th Annual Post Racial America Day Rally," at James Scruggs' MELT!, part of the Out of Line series.



**"OUR PUBLIC PROGRAMS BRING PEOPLE TOGETHER TO EXPERIENCE WORK BY NEW YORK-BASED ARTISTS EXPERIMENTING IN PUBLIC SPACE. WE'RE ALWAYS DOING SOMETHING A LITTLE BIT OUT OF THE ORDINARY."**

— Solana, Vice President, Public Engagement







Andrea Bowers, Somos 11 Millones/We Are 11 Million (in collaboration with Movimiento Cosecha), part of Agora

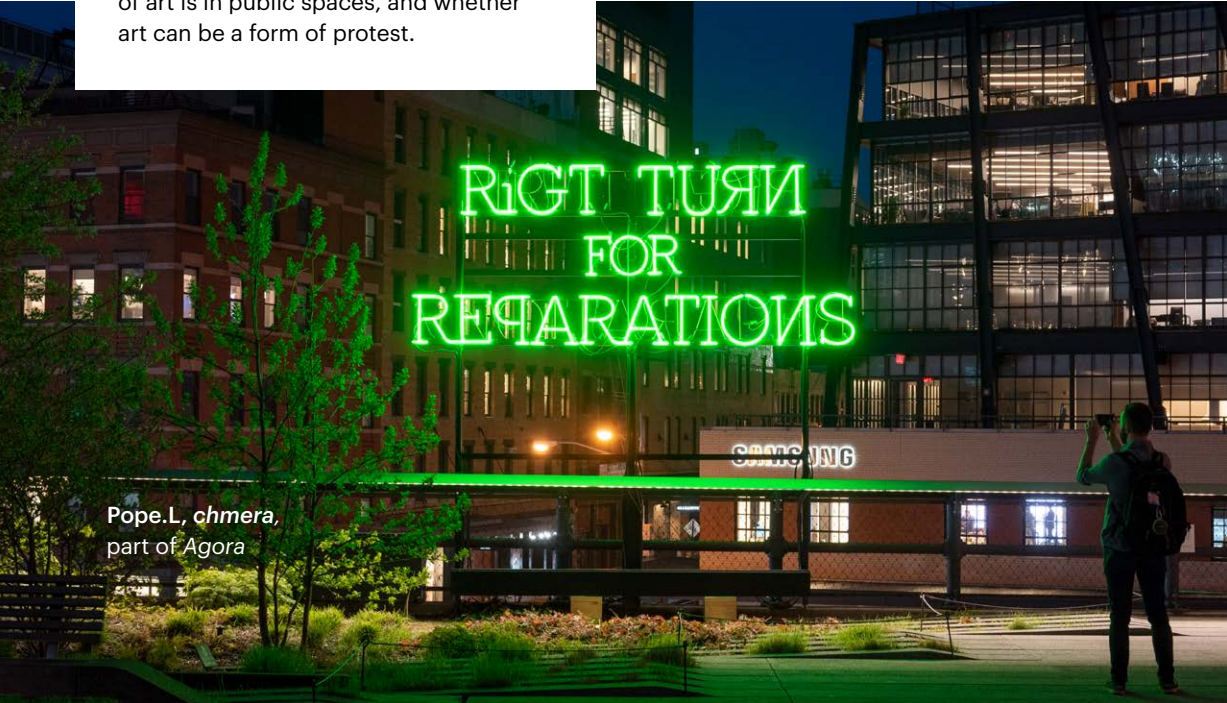
**Agora** (Greek for “gathering place”) is a group exhibition that looks at the power of art to change society, what the role of art is in public spaces, and whether art can be a form of protest.

**“THE HIGH LINE IS SUCH A LAYERED, MULTIFACETED SPACE, UNLIKE ANY OTHER IN NEW YORK FOR PUBLIC ART. WE HAVE THIS TREMENDOUS OPPORTUNITY TO GIVE SPACE TO NEW VISIONS AND NEW FORMS OF CELEBRATION.”**

— Cecilia, Donald R. Mullen, Jr.  
Director & Chief Curator of High Line Art



Dorothy Iannone, *I Lift My Lamp Beside the Golden Door*



Pope.L, *chmera*, part of Agora





The High Line is:

## **INSPIRING INNOVATION**

The magic of *The Mile-Long Opera: a biography of 7 o'clock* showed us what we're capable of achieving. Co-conceived by Diller Scofidio + Renfro and David Lang, and made in collaboration with nonprofit partners and communities across the city, this was our largest, most ambitious project to date. It represents the kinds of forward-thinking programs we're most excited to get behind.

**"EVERY PERSON YOU PASS ON A NYC STREET HAS A STORY TO TELL. TO ME THE MILE-LONG OPERA IS SIMPLY A REFLECTION OF THAT AND BEING STAGED ON THE ICONIC HIGH LINE PLACES THOSE STORIES ON A PART OF THE CITY THAT HAS STOOD THROUGH TIME AND CHANGED!"**

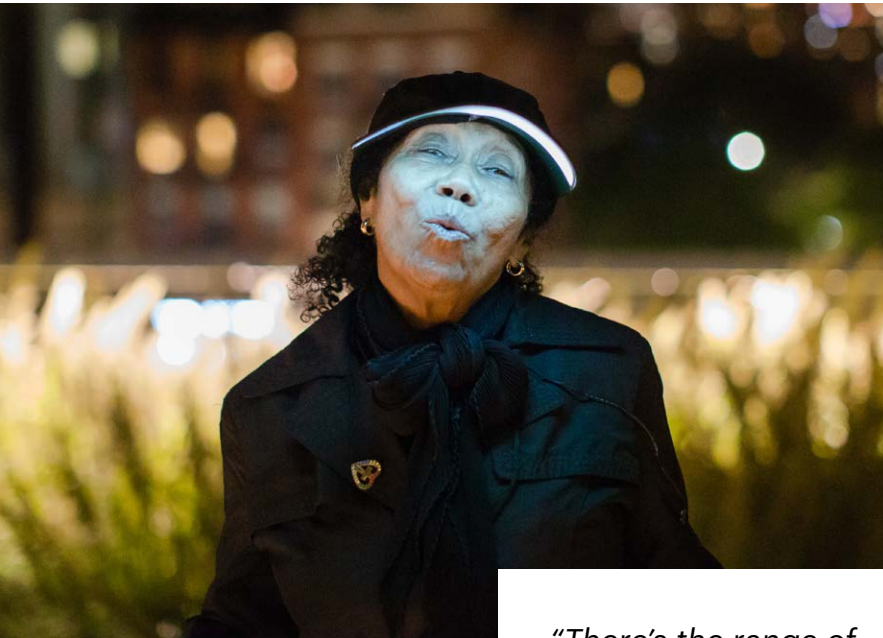
— Keith, *Glass Menagerie* choir member

**"I CAN'T TELL YOU HOW MANY PEOPLE STOPPED TO LISTEN AND NODDED IN AGREEMENT, EVEN HELD THEIR HEARTS AND BOWED THEIR HEADS AND EVEN MOUTHED 'THANK YOU.'"**

— Participating choir member

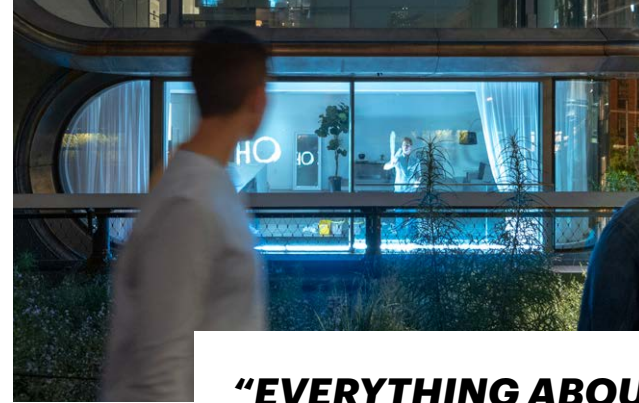
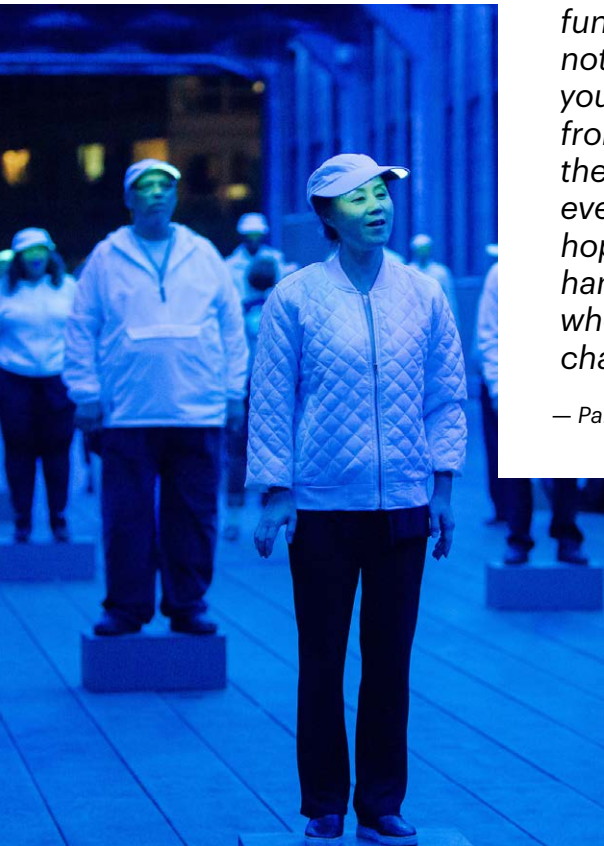






*“There’s the range of emotions you feel when you say, ‘funny how hope changes everything... funny how hope changes nothing.’ Because whether you’re a New Yorker or from some other part of the world, it has become even more relevant to hope for change and handle the struggles when that hope is challenged.”*

— Participating choir member



**“EVERYTHING ABOUT THE HIGH LINE SHOULD HAVE BEEN A ‘NO’ AND THEY MAKE IT A ‘YES’—INCLUDING ALL THE SPECIAL EVENTS LIKE THE MILE-LONG OPERA.”**

— The Mile-Long Opera attendee

**1.5 miles**  
**6 nights**  
**6 nonprofit partners**  
**38 choirs**  
**1,000 singers**  
**10,000+ attendees**

**“IN A DIVISIVE TIME WHERE WE SEEM TO HAVE MORE TO DISAGREE THAN AGREE ON, THE MILE-LONG OPERA REMINDS US TO REFLECT ON THAT SHARED HOUR OF 7 O’CLOCK IN THE EVENING. ‘NO, WE DON’T TALK, BUT... PEOPLE GET TO KNOW EACH OTHER JUST BY WALKING PAST EACH OTHER ALL THE TIME.’”**



— The Mile-Long Opera attendee



Thanks to the Presenting Sponsor, Target, the performances are now free to watch anytime, anywhere with a 360° digital experience.



*“While under the night sky and the blaring lights of New York City buildings, a helicopter passing overhead, the subway cars parked in front of me, a blow horn from a ship, a person yelling on the street, or a car blasting music, there is this peace. This serenity. This feeling of interconnectivity that is often lost in the hustle of everyday New York life.*

*To have permission to look into the eyes of passersby. All ages, backgrounds, presentations, identities. The usual fear dissipates. At times I wonder if this is too intimate, yet I remember the words of (Music Director) Donald Nally in his letter to us all: that we are Storytellers.*

*I try to connect with whomever will listen. I take a moment to acknowledge those who drop their guard to look back at me. I follow the ones who never look up. I take a deep breath and relax into the gaze of a stranger, those who have stood in front of me, listened to my words, walked just past me, and cried.”*

— Rachel Kara, R.Evolución Latina choir member

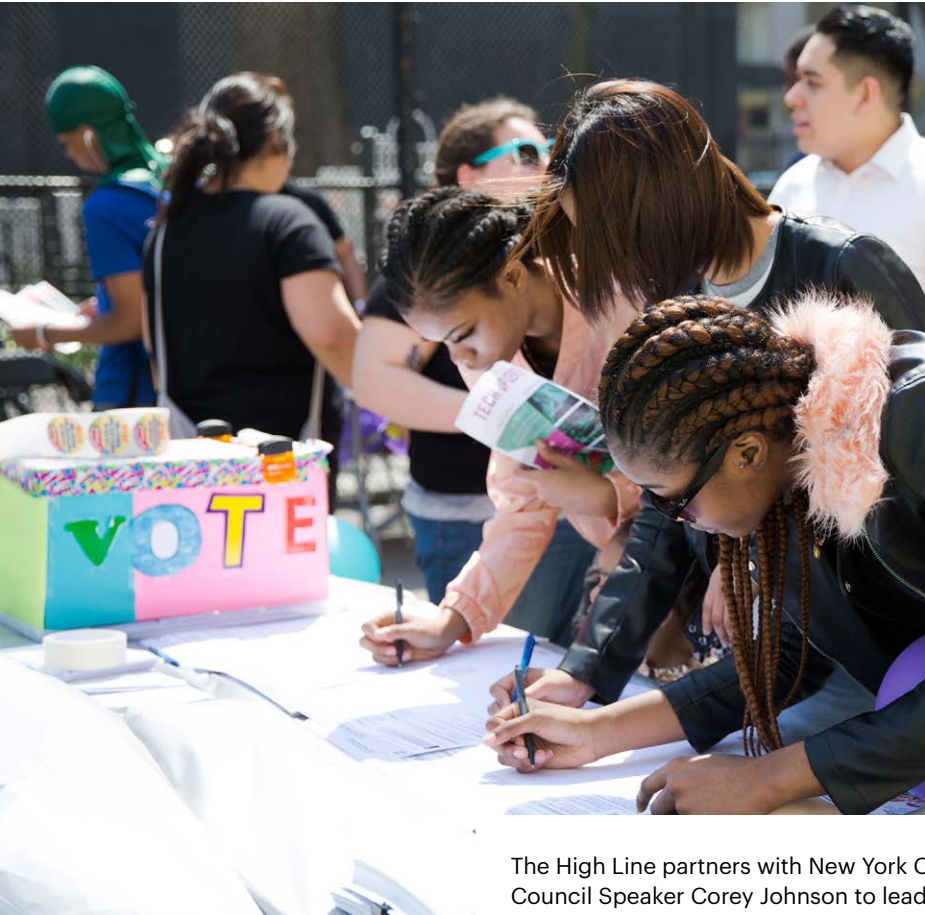




The High Line is:

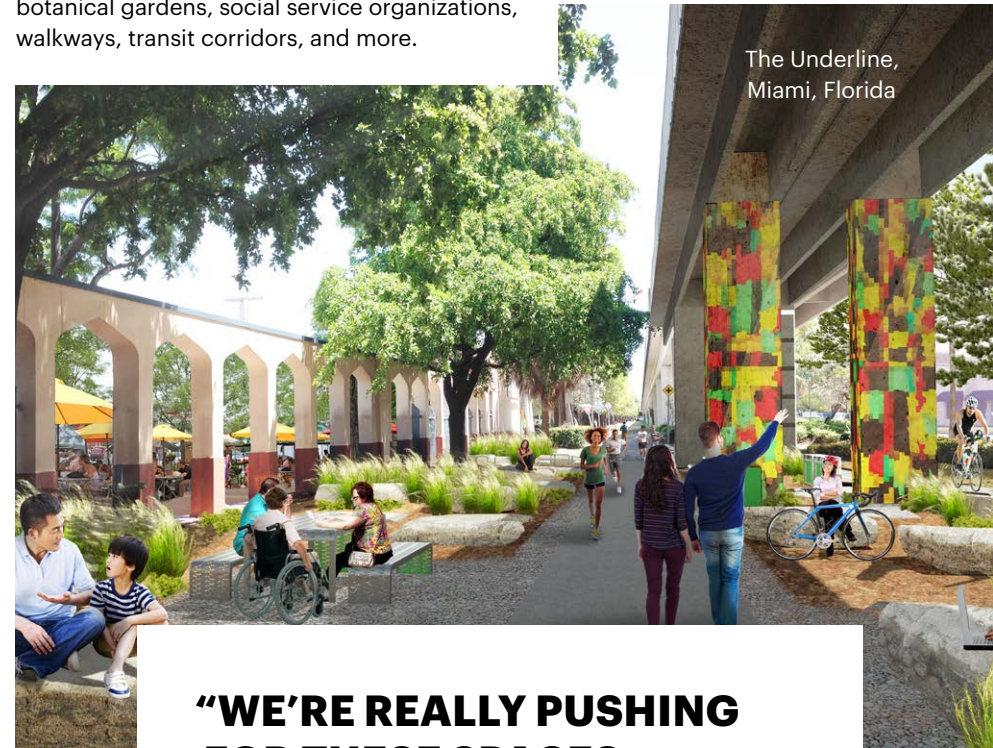
# BUILDING RELATIONSHIPS

Through our partnerships with other industrial reuse projects and community-based organizations, and by providing hands-on civic engagement experience with our teen programs, we build connections both on and off the High Line.



The High Line partners with New York City Council Speaker Corey Johnson to lead **Participatory Budgeting** efforts in District 3 with our committee of paid teen staff.

Projects in the **national High Line Network** transform underutilized infrastructure. Like us, these hybrid spaces are more than parks; they're public squares, open-air museums, botanical gardens, social service organizations, walkways, transit corridors, and more.



The Underline,  
Miami, Florida

**“WE’RE REALLY PUSHING FOR THESE SPACES THAT MIGHT HAVE BEEN CONSIDERED OBSOLETE OR NO LONGER INTERESTING TO BE TRANSFORMED INTO VIBRANT, DEMOCRATIC COMMUNITY HUBS.”**

— Ana, *Manager of the High Line Network*





The **Green Council** is a group of teens working in horticulture, community gardening, and food justice.



**“THE GREEN COUNCIL MAKES ME FEEL PROUD BECAUSE I’M GIVING BACK TO ALL THE COMMUNITIES THAT NEED A HAND TO MAKE THEM THRIVE, AND TO INSPIRE OTHER PEOPLE TO DO THE SAME WORK.”**

— Padmavati, *Green Council member*



The **local High Line Network** works with 11 industrial reuse projects across the five boroughs of New York City. The group focuses on environmental justice, equitable and sustainable land use, fundraising, and movement building.



Gowanus Lowlands, Brooklyn



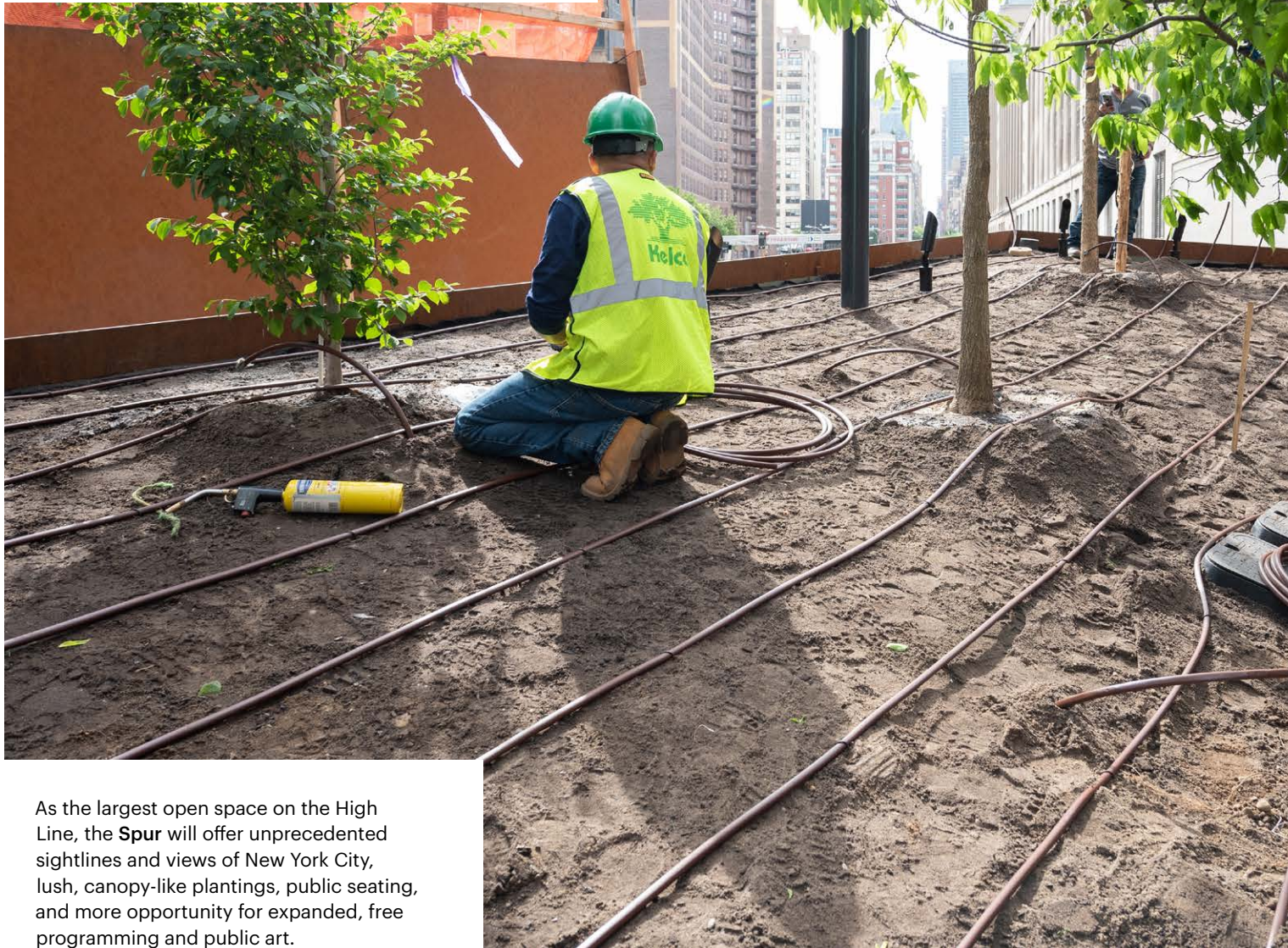
Local Network convening at the High Line office.



The High Line is:

## EVOLVING INTO THE FUTURE

We're excited for the big changes happening in 2019—the completion of the Spur at West 30th St. & 10th Ave., and the High Line Plinth, a new site for major public art commissions located on the Spur.



As the largest open space on the High Line, the Spur will offer unprecedented sightlines and views of New York City, lush, canopy-like plantings, public seating, and more opportunity for expanded, free programming and public art.

***“WE’RE FOCUSING ON PEOPLE OCCUPYING THE SPACE BY TAKING THE GUTS OF THE HIGH LINE—THE STEEL AND CONCRETE, THE PLANTING AND THE VIEW—AND MAKING THOSE THE THINGS THAT RESONATE AS A VERY PUBLIC SPACE.”***

— Adam, Vice President for Planning & Design



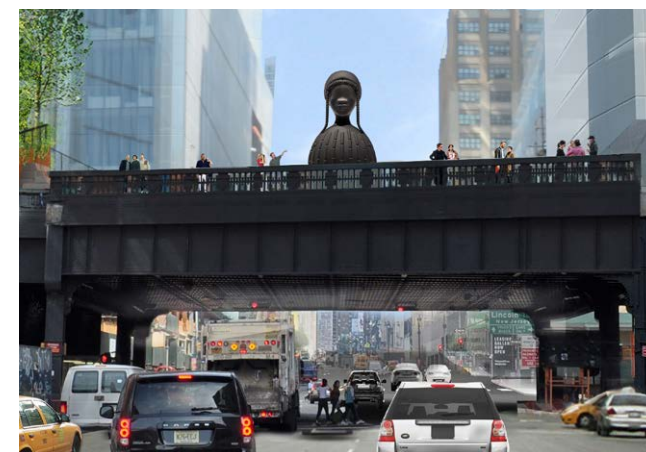


The **High Line Plinth** is the focal point of the Spur. This site is dedicated to a rotating series of monumental, contemporary art commissions. The inaugural commission for the Plinth will be **Simone Leigh's *Brick House***, opening April 2019.



**"I THOUGHT: 'WHAT BETTER PLACE TO PUT A BLACK FEMALE FIGURE?' NOT IN DEFIANCE OF THE SPACE, EXACTLY, BUT TO HAVE A DIFFERENT IDEA OF BEAUTY THERE."**

— Simone Leigh, pictured left with her work in progress, as quoted in *The New York Times*

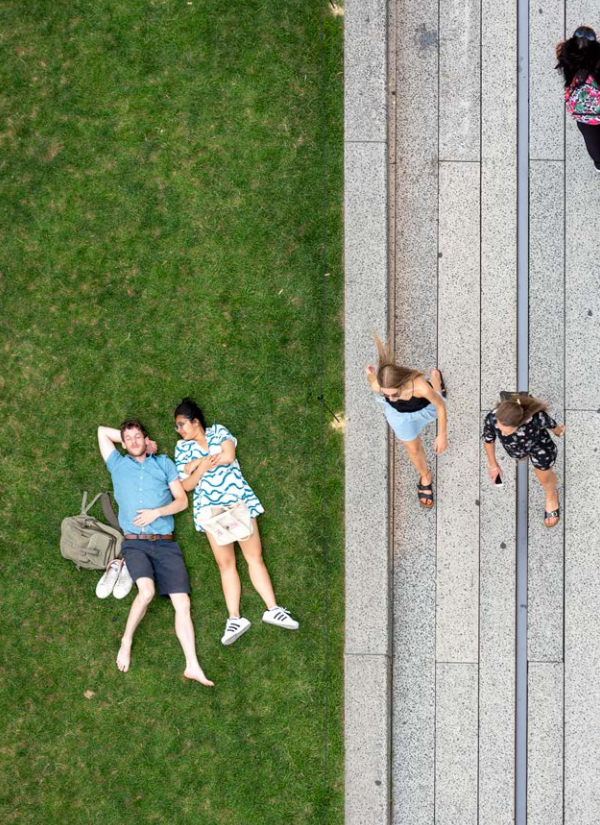




The High Line is:

# FOR EVERYONE

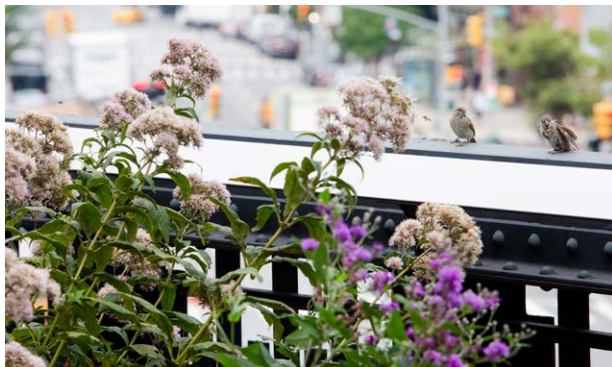
The High Line is proud to be part of the fabric of New York City. We serve over 2 million New Yorkers every year, while also connecting to people from all around the world.



The crowd enjoying the band **Los Cumples años** at Culture Shock.

**“WALKING THE HIGH LINE IS THE FIRST THING I DO IN THE MORNING. THIS IS MY 50TH YEAR IN NEW YORK, AND WHAT I REALLY LOVE ABOUT THE HIGH LINE IS THAT IT’S AN ENTIRELY DIFFERENT PERSPECTIVE ON THE CITY.”**

— Robert, High Line neighbor





**“ON THE HIGH LINE, THE ACTS OF GATHERING AND TALKING ARE POWERFUL TO SEE. AND THE CONVERSATION IS ALWAYS BETTER WHEN PEOPLE DON’T KNOW EACH OTHER AND WHEN THEY ARE COMING FROM DIFFERENT BACKGROUNDS AND PERSPECTIVES.”**

— McKendree Key, B.Y.O. artist



B.Y.O. (Bring Your Own), a 2018 series of intimate dialogues led by artists, sought to deepen our understanding of the cultural and social issues of our time.



**In a single year, you make  
all this possible:**

**40,000+**

public program  
attendees

**30+**

new artworks

**110,000**

individual plants nurtured  
& trees cared for

**500+**

species of perennials,  
grasses, shrubs & trees

**100+**

full-time staff

**200+**

volunteers

**50+**

seasonal & part-time staff

**7,523,967**

park visitors

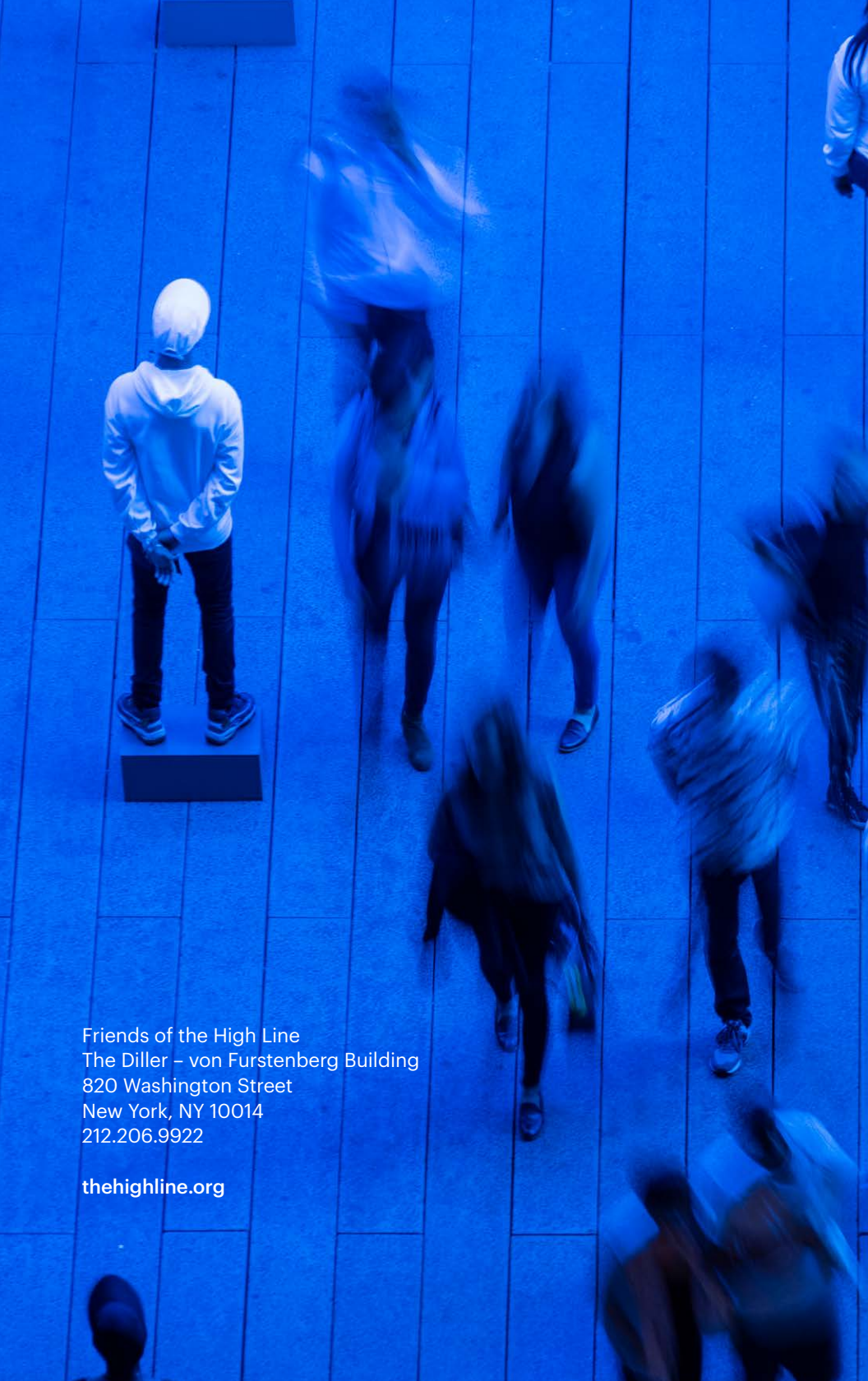
# ALL THANKS TO YOU

You make the High Line a place where the city comes alive in new ways. Your continued support allows a multitude of people to experience the transformative power of the High Line. Thank you for contributing to our story.

To make a gift today, visit:  
[thehighline.org/donate](https://thehighline.org/donate)

**PHOTO CREDITS** Timothy Schenck: cover, 2, 6, 7, 13, 14, 18, 25-30; Steven Severinghaus: 3; Liz Ligon: 4, 8, 11, 15-19, 23, 24, 30-32; Rowa Lee: 9; Amelia Holowaty Krales: 9; Rachel Watkinson: 10; Joel Sternfeld: 12; Julieanne Prevete: 21; Rendering by SCAPE, courtesy of Gowanus Canal Conservancy: 22; Rendering by James Corner Field Operations, courtesy of Friends of The Underline: 24; Rendering by James Corner Field Operations and Diller Scofidio + Renfro, courtesy of the City of New York: 28





Friends of the High Line  
The Diller – von Furstenberg Building  
820 Washington Street  
New York, NY 10014  
212.206.9922

[thehighline.org](http://thehighline.org)



# THANKS

We're grateful to our generous supporters who make the High Line a place where the city comes alive in new ways.

TD Bank is the Presenting Green Sponsor of the High Line.

High Line Gardens are supported by Greenacre Foundation.

Lead support for High Line Art is provided by Amanda and Don Mullen. Major support is provided by The Brown Foundation, Inc. of Houston, and Charina Endowment Fund. High Line Art is supported, in part, with public funds from the New York State Council on the Arts with the support of Governor Andrew Cuomo and the New York State Legislature, and from the New York City Department of Cultural Affairs, in partnership with the New York City Council, under the leadership of Speaker Corey Johnson.

*Agora* is supported, in part, by an award from the National Endowment for the Arts.

Dorothy Iannone, *I Lift My Lamp Beside the Golden Door*, is made possible, in part, by an in-kind donation from Colossal Media.

Major support for the High Line Plinth comes from the High Line Plinth Committee, a group of contemporary art leaders committed to realizing major commissions and engaging in the public success of the Plinth. The High Line Plinth Committee includes Shelley Fox Aarons, Fairfax Dorn, Andrew Hall, Hermine Riegerl Heller, J. Tomilson Hill, Dorothy Lichtenstein, Donald R. Mullen, Jr., Mario J. Palumbo, Jr., and one anonymous donor.

High Line Programs are supported, in part, with public funds from the New York City Council, under the leadership of Speaker Corey Johnson.

Major support for High Line Teens is provided by Jamie and Jeffrey Harris. Program support is provided by Lynne Waxman Foundation—Jessica Davis and Sandy Klein, and Sarah Min and Matt Pincus. Additional support is provided by The Palette Fund. Program support for Green Council is provided by the JPMorgan Chase Foundation. Additional support for Green Council is provided by the Merck Family Fund. High Line Teens is also supported with public funds from the New York City Department of Cultural Affairs in partnership with the New York City Council—with special thanks to Speaker Corey Johnson and the Greener NYC Initiative.

Major support for High Line Education is provided by The Brown Foundation, Inc. of Houston. This program is also made possible by the JPMorgan Chase Foundation.



High Line Education and High Line Families are supported, in part, with public funds from the New York City Department of Cultural Affairs in partnership with the New York City Council, under the leadership of Speaker Corey Johnson.

The High Line Network is made possible by the founding support of The JPB Foundation.

The High Line Volunteer Program is supported, in part, by REI.

High Line general operating support is provided by The Horace W. Goldsmith Foundation; The Standard, High Line; Johnson & Johnson; Boston Consulting Group; L'Oréal USA; The High Line Hotel; Comedy Central; The Arthur M. Blank Family Foundation; and RH, Restoration Hardware.

Target was the Presenting Sponsor of *The Mile-Long Opera*.

Producing support for *The Mile-Long Opera* was provided by the Laurie M. Tisch Illumination Fund and one anonymous donor. Lead support was provided by the Dunard Fund USA, Frederick J. Iseman, and The Julis-Rabinowitz Family. Major support was provided by Roman Abramovich, the Brodsky Family Foundation, the Catherine and Paul Buttenwieser Foundation, Caroline and Paul Cronson, Dan and Alisa Doctoroff, Katherine

Farley and Jerry Speyer, Perry and Marty Granoff, Agnes Gund, DuBose & Dorothy Heyward Memorial Fund, Wendy Keys, Bruce and Suzie Kovner, Marie-Josée and Henry R. Kravis, the Prior Family Foundation, Steven Roth, Sciame Construction LLC, Roy and Diana Vagelos, Witkoff, Dasha Zhukova, Ann Ziff, and two anonymous donors. In-kind support was provided by the Javits Center, the Meatpacking Business Improvement District, Meyer Sound, and the Whitney Museum of American Art. Many thanks to our off-site venues: 515 West 29th Street; 520 West 28th Street by Zaha Hadid; Avenues: The World School; exposed.nyc; The Shed; and The Standard, High Line.

#### **Friends of the High Line**

Joshua David,  
*Co-Founder*  
Robert Hammond,  
*Co-Founder*

#### **Board of Directors**

Mario J. Palumbo, Jr., *Chair*  
Susan Viniar, *Vice Chair*  
Philip E. Aarons,  
*Founding Chair*  
Jennifer Allan Soros  
John H. Alschuler  
John Blondel  
Amanda M. Burden  
Ursula M. Burns  
Sharon Davis  
Kristen M. Dickey  
Lisa Maria Falcone  
Ellen M. Fitzsimmons  
Alexandre von Furstenberg  
Robert Hammond,  
*Executive Director*

Gary Handel  
Jeffrey Harris  
Hermine Riegerl Heller  
Karen Herskovitz  
J. Tomilson Hill  
Sandra Jackson-Dumont  
Wendy Keys  
Jane Lauder  
Heather McDowell Levin  
Catie Marron  
Gifford Miller  
Sarah Min  
Ackneil M. Muldrow, III  
Donald R. Mullen, Jr.  
Michael Phillips  
Steven Rubenstein  
Mitchell J. Silver  
Jason Stewart, *Treasurer*  
Jon Stryker  
Darren Walker  
Peter S. Wilson, *Secretary*  
Bronson van Wyck

#### **Ex-Officio Members**

Alicia Glen  
*Deputy Mayor for  
Housing and Economic  
Development*

Corey Johnson  
*Speaker, New York City  
Council*  
Mitchell J. Silver, FAICP,  
Hon. ASLA  
*Commissioner, NYC Parks*

—

As of October 31, 2018